

SmartBox System Manager 3.0 Installation Guide

Requirements

The SmartBox System Manager 3.0 requires the .NET Framework 4.0 to be installed for the application to run. The .NET Framework 4.0 and the SmartBox System Manager 3.0 requires one of the following operating systems:

1. Windows XP SP3
2. Windows Vista 32-bit/64-bit
3. Windows 7 32-bit/64-bit
4. Windows 8 32-bit/64-bit

Older operating systems are not supported.

Installation Steps

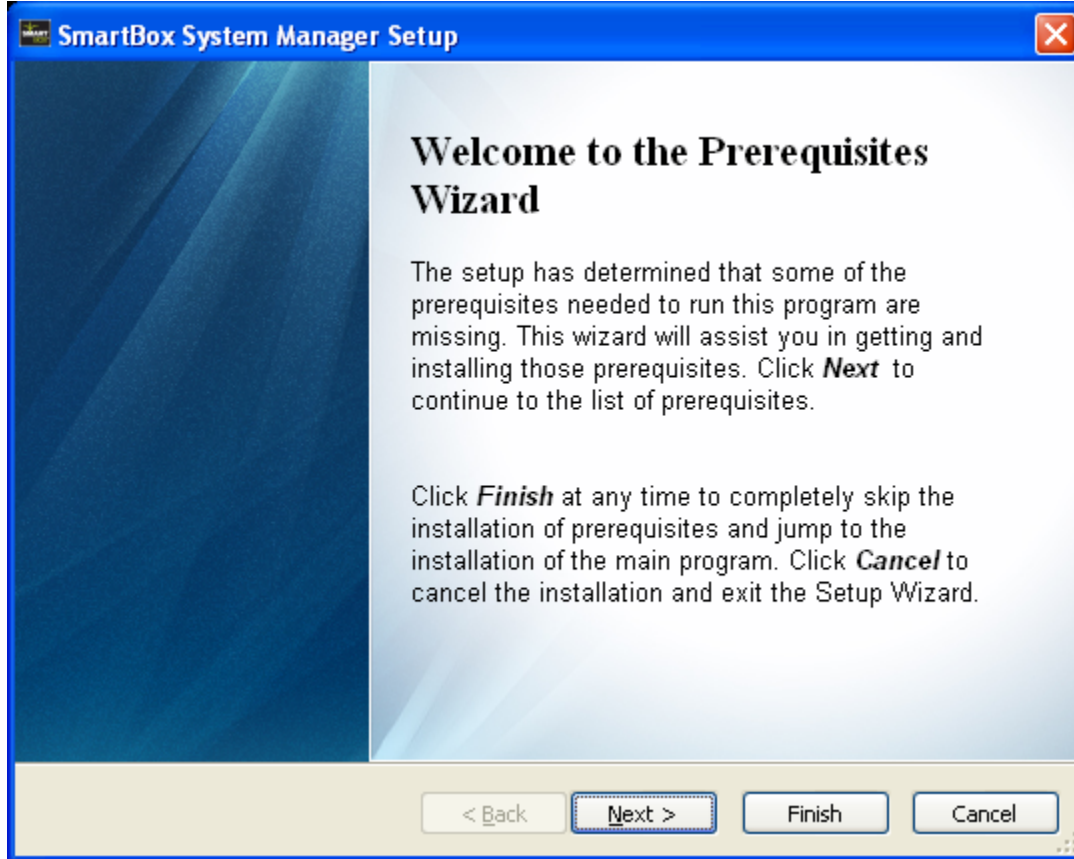
Step 1: Shut down any programs that are running on your computer.

Step 2: Insert the SmartBox System Manager software CD into your CD-ROM drive. The installation wizard screen will automatically appear on your screen within 15 seconds.

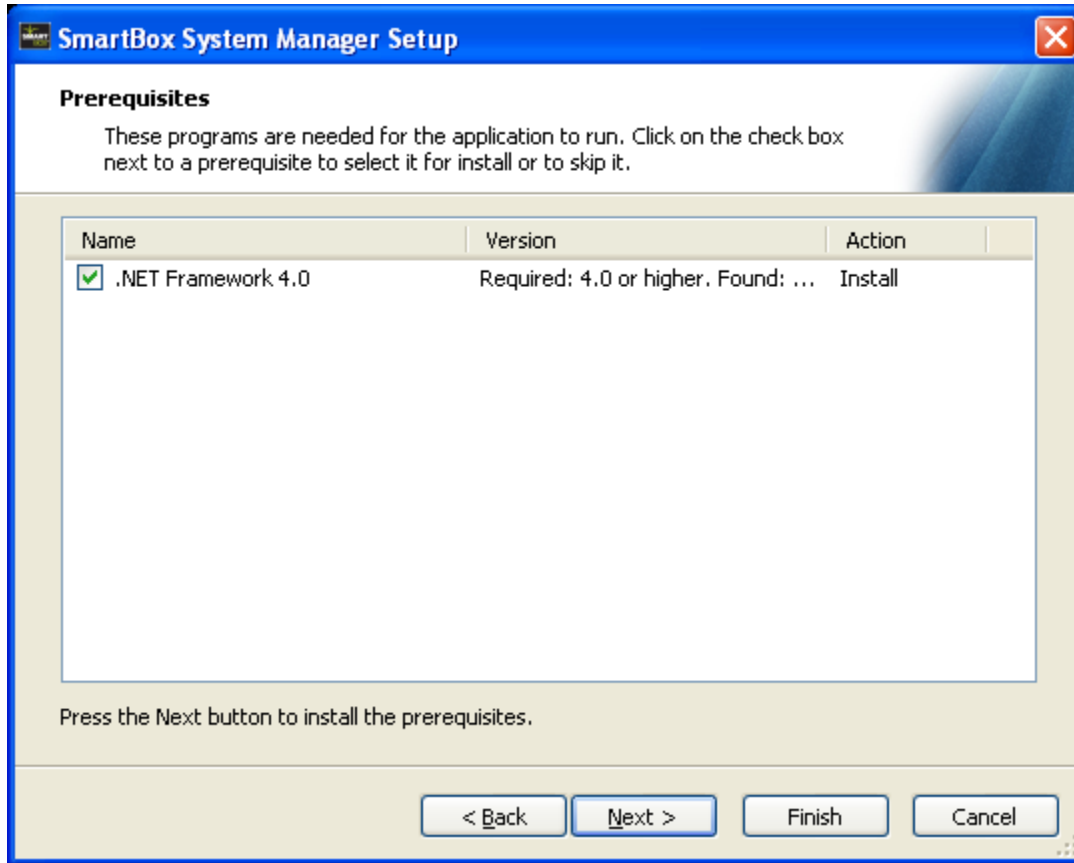
NOTE: If the installation wizard does not start up automatically, select your CD-ROM drive from “My Computer” and double-click on the file named “setup.exe” on the the CD-ROM. If you cannot see filename extensions then double-click on the file named “setup” that has the SmartBox logo next to it.

Step 3: If your computer requires the .NET Framework 4.0 to be installed then proceed with the following steps. Otherwise skip to step 10.

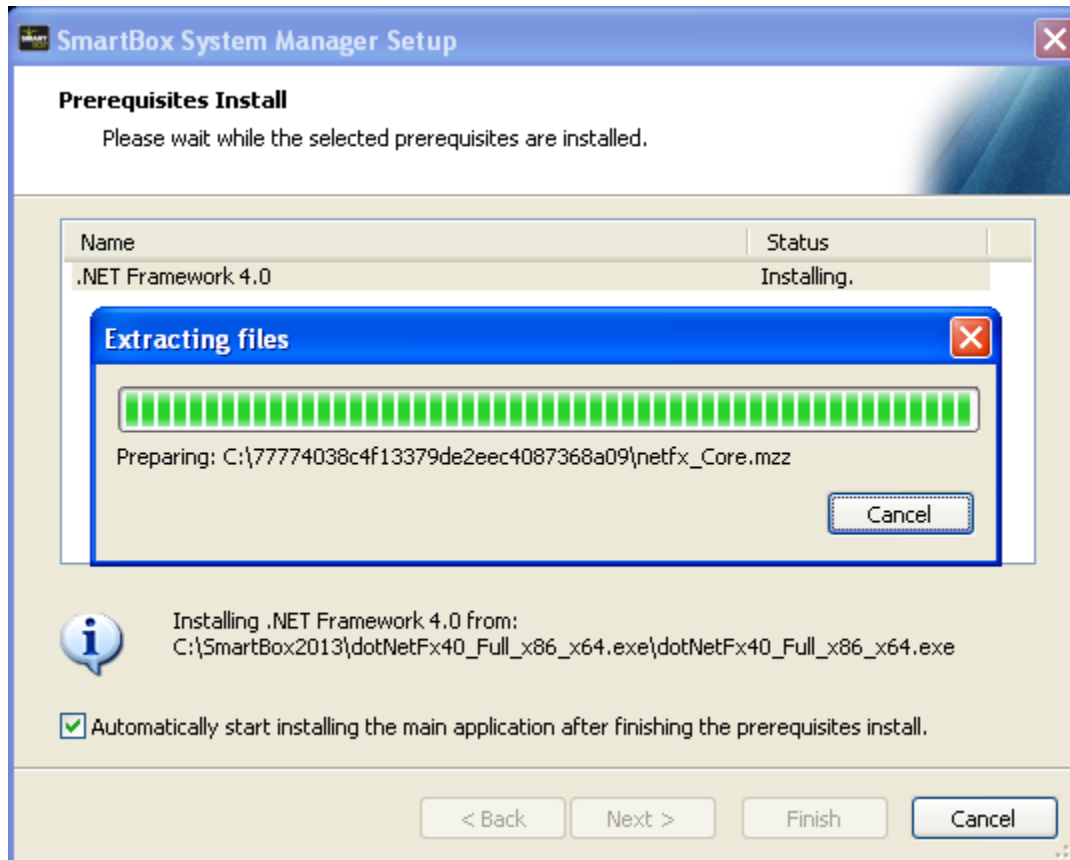
Step 4: Installing the .NET Framework 4.0 initial screen. Click Next to continue.



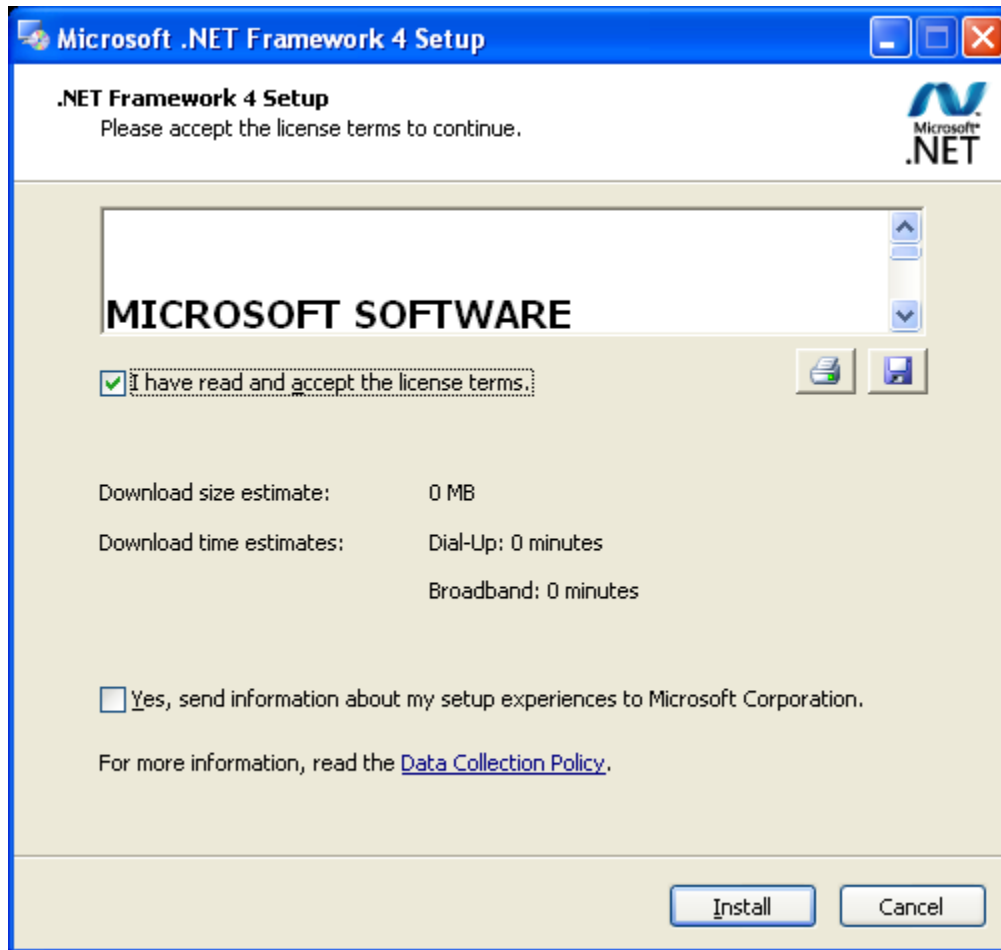
Step 5: Ensure that the box next to .NET Framework 4.0 is checked and then click on Next.



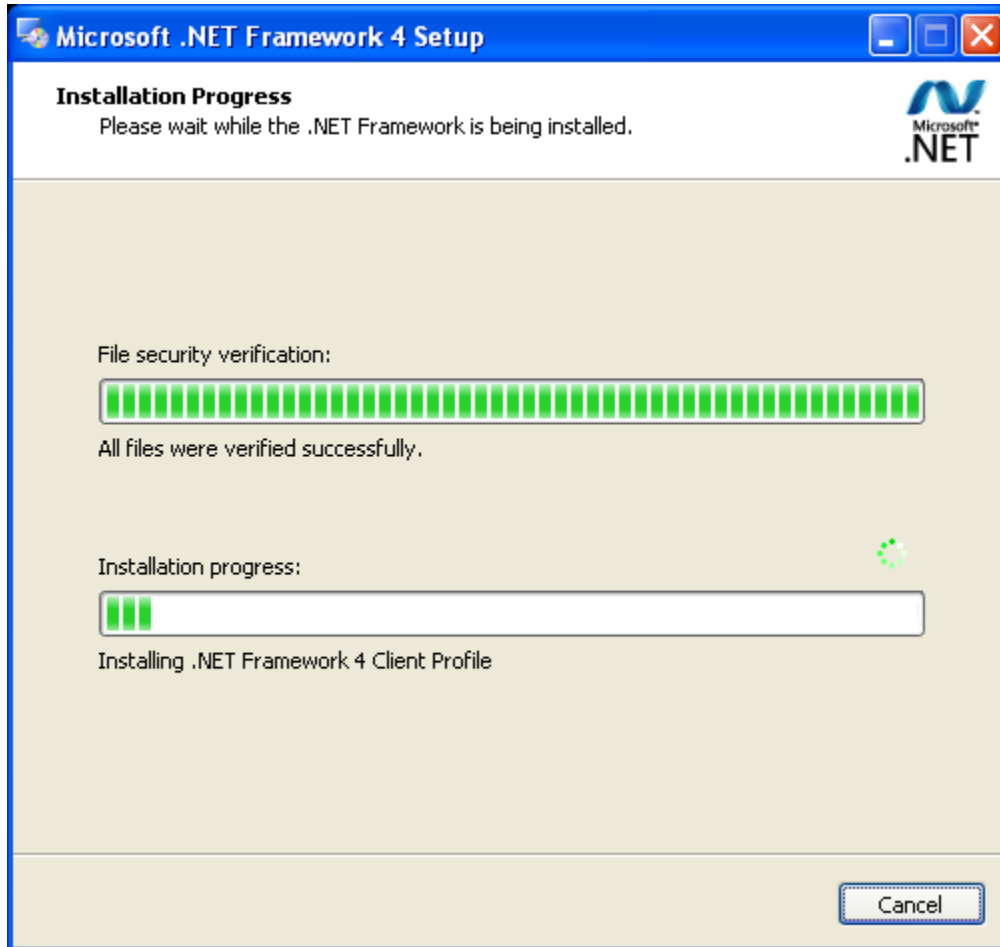
Step 6: After clicking Next the .NET Framework 4.0 is unpacked and prepared for installation.



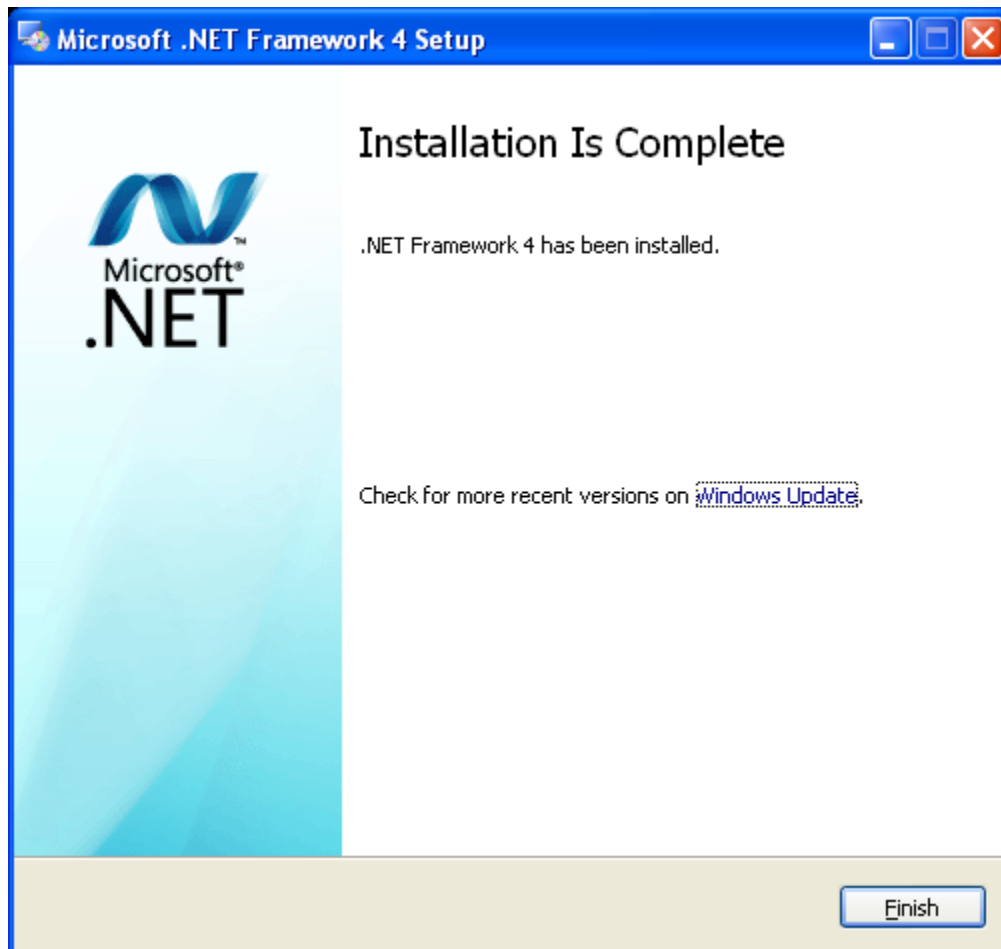
Step 7: When presented with this screen, ensure that the box is checked stating that you have read and accept the license terms. Then press Install to continue.



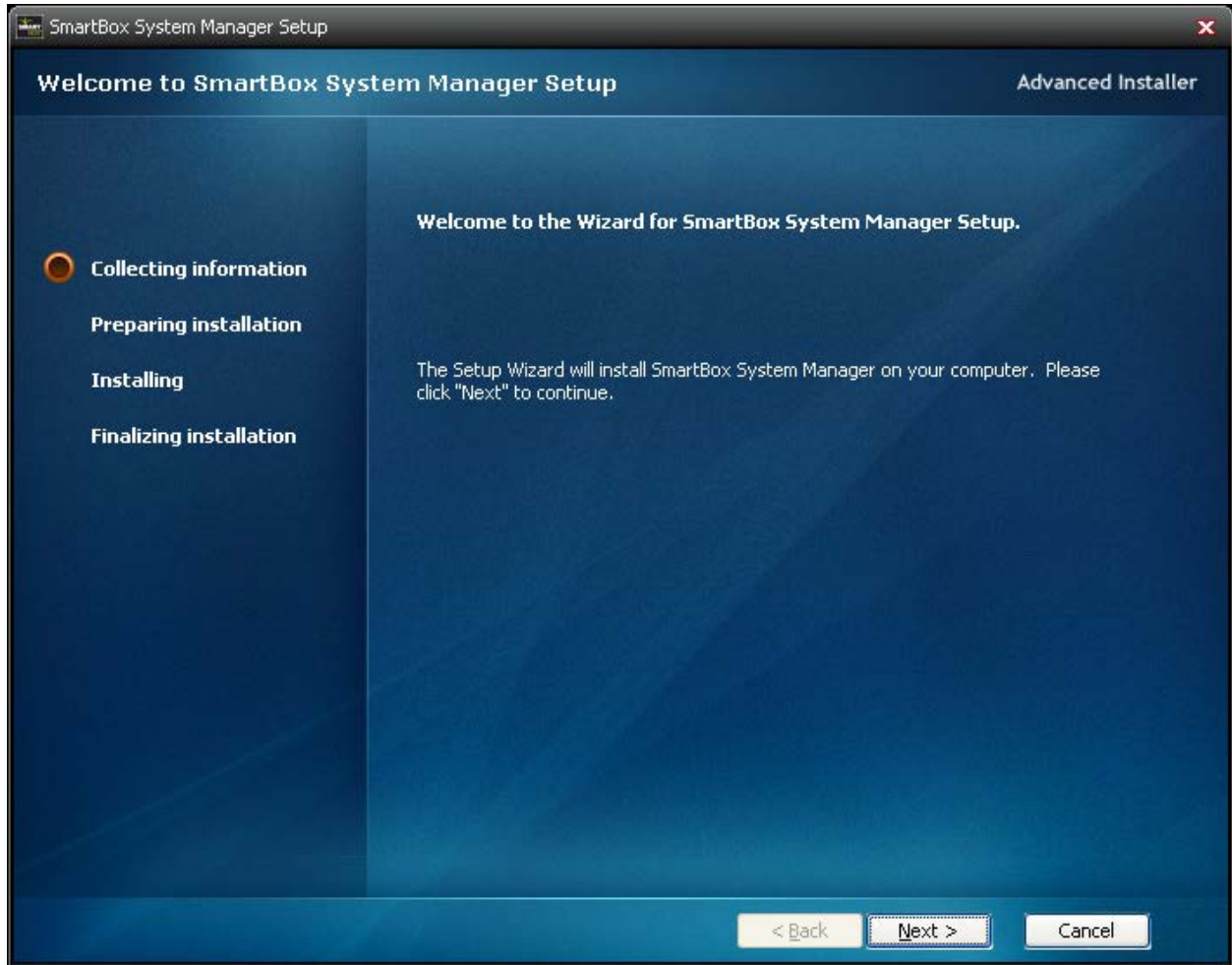
Step 8: This screen displays the installation progress of the .NET Framework 4.0



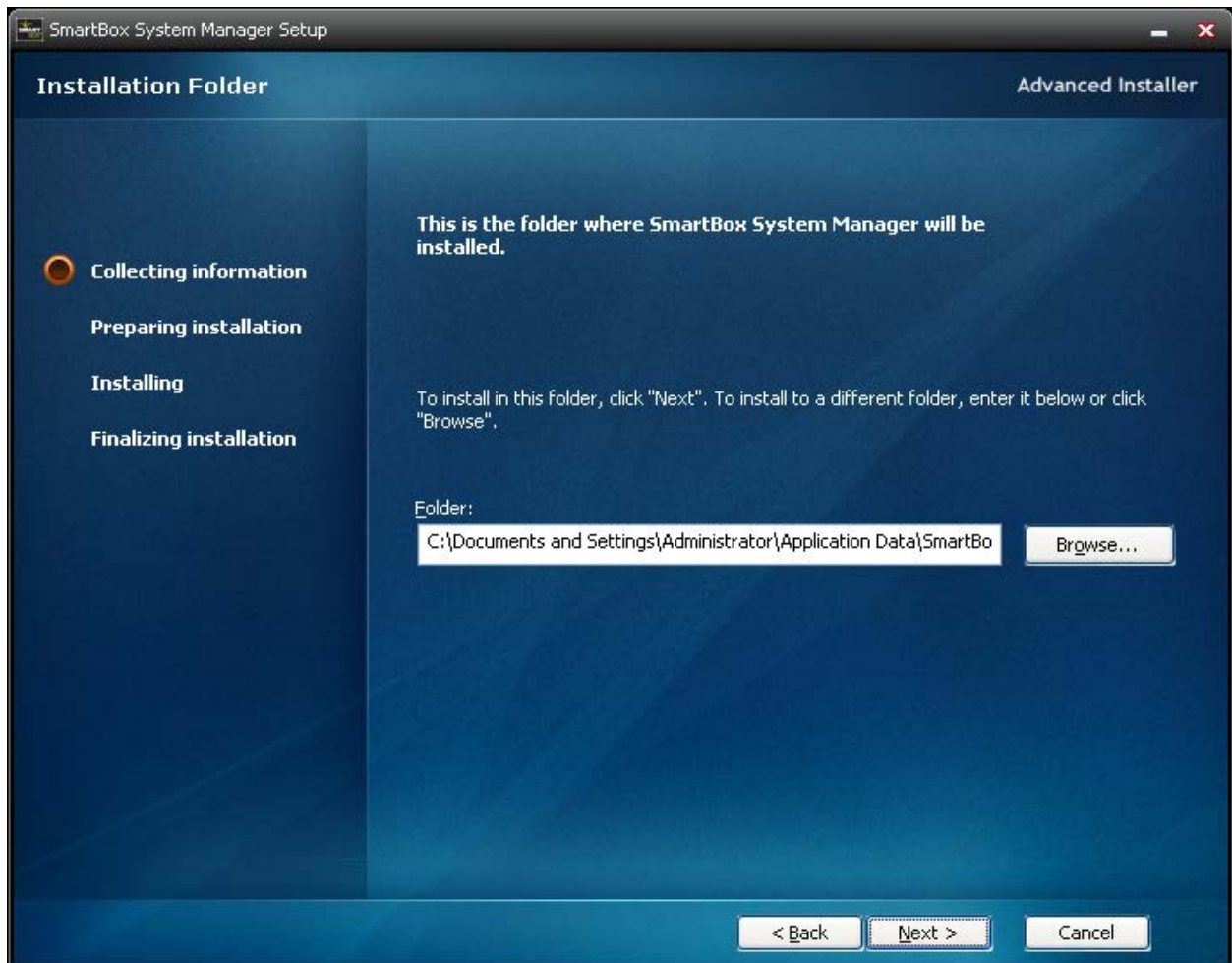
Step 9: After the installation has completed, click Finish. After the installation of the .NET Framework 4.0 has completed, the installation of the SmartBox System Manager should resume automatically. If it does not then double-click on the “setup.exe” file on the CD-ROM to begin. If you cannot see filename extensions then double-click on the file named “setup” that has the SmartBox logo next to it.



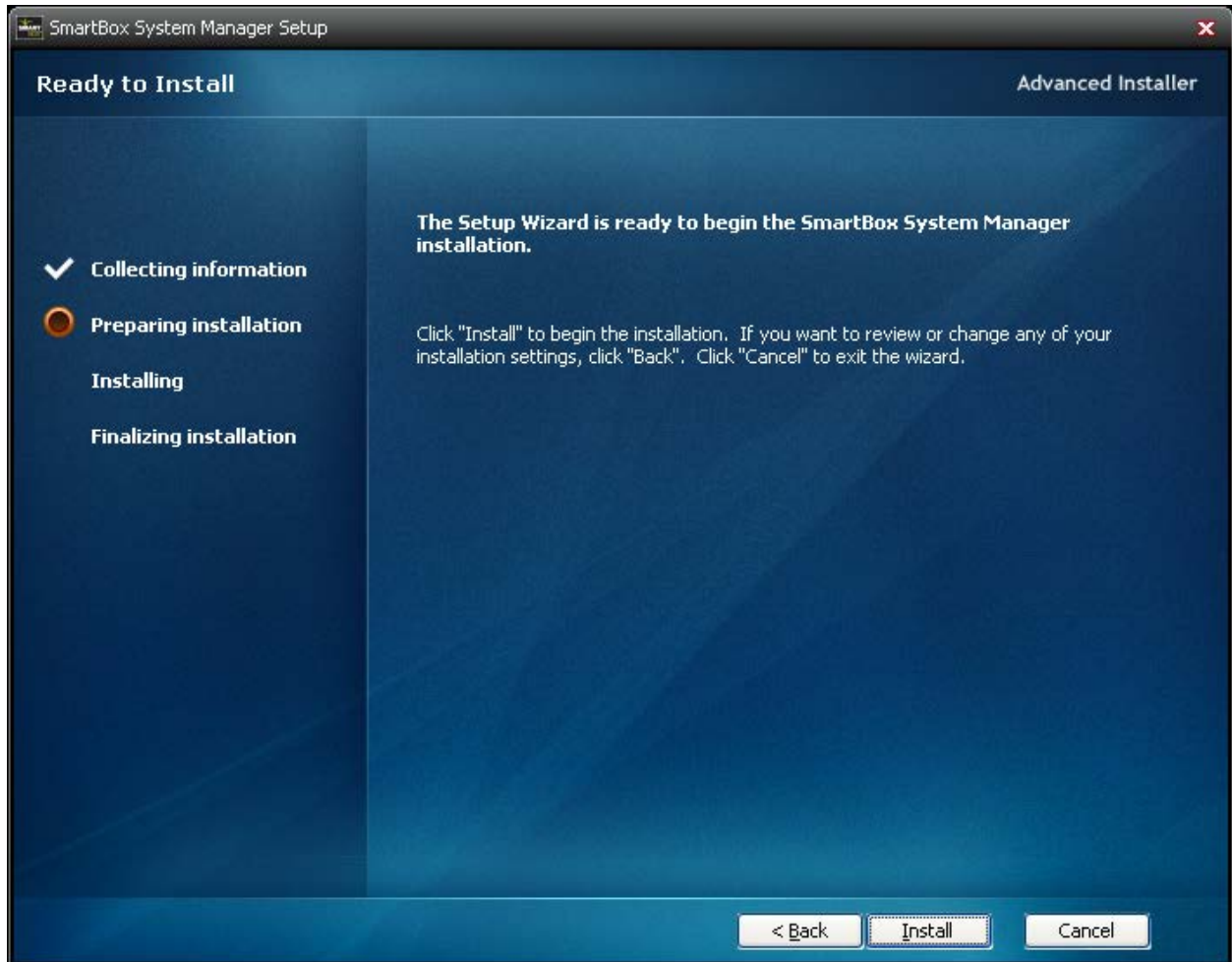
Step 10: Initial installation screen of the SmartBox System Manager. Click Next to continue.



Step 11: This screen allows you to set the installation location for the software. It is recommended that you accept the default location. Click Next to continue.



Step 12: This screen just verifies that you are ready to install. Click Install to continue. During the installation of the software, your computer security settings may require that you allow the installation of the software. Please allow the installation to continue.



Step 13: The installation has completed. Click Finish to end the installation process.

